

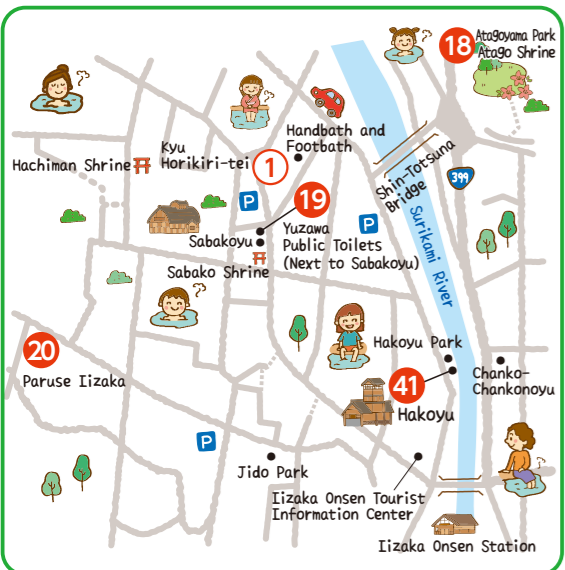
Peace of mind while you travel
Onsen Area Toilet Information

Iizaka Onsen



- Access
- 5 min from the Fukushima-Iizaka IC on the Tohoku Expressway
 - 25 min from Fukushima Station on the Iizaka Line

The ancient hot spring waters are said to have been discovered around 3000 BCE. The area was visited by famed Japanese poet Matsuo Basho. There are 9 public baths to visit and enjoy.



41 Public Onsen Hakoyu



- Access
- 6:00~22:00
 - *Closed: Tuesdays

Tsuchiyu Onsen



- Access
- 20 min from the Fukushima-Nishi IC on the Tohoku Expressway
 - 45 min by bus from Fukushima Station

This historical onsen area was discovered in the valley around 580. The area is known as a producer of kokeshi dolls, and you can see many kokeshi around town.



42 Public Onsen Nakanoyu



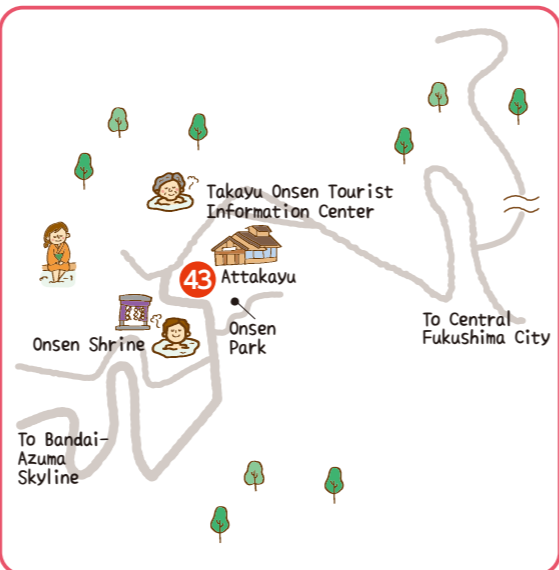
- Access
- 9:00~21:00
 - *Closed: Tuesdays

Takayu Onsen



- Access
- 30 min from the Fukushima-Nishi IC or Fukushima-Iizaka IC on the Tohoku Expressway
 - 45 min by bus from Fukushima Station

A feature of this onsen is the medicinal properties of the milky-white sulfurous spring waters. Soak in spring water direct from the source. It is a popular tourist spot because of the high quality of the spring waters.



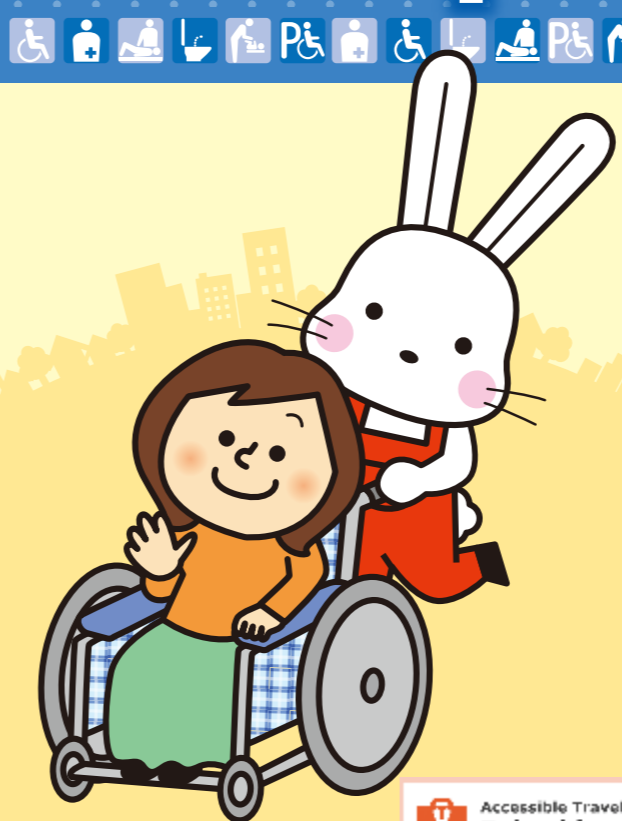
43 Public Onsen Attakayu



- Access
- 9:00~21:00
 - *Closed: Thursdays

Useful for tourism and shopping!

Fukushima City Toilet Map



Accessible Travel Fukushima



The Fukushima Barrier-Free Tour Center is located in the Fukushima City Tourist Information Center at the JR Fukushima Station West Exit (2F).

The Center is located in Fukushima City and provides wheelchair, accessibility, and toilet information about accommodation and tourist destinations in Fukushima Prefecture.

We can provide individual travel information for unique individual so that you can enjoy your stay in Fukushima.

All inquiries welcome ▶

● Come and Visit Fukushima! ●

Wheelchair Rental Information



- [Wheelchairs] 2
[Rental Hours] 9:00~17:30
[Rental Fees]
Less than 2 Hours ... Free
1 Day ... 500 yen
2 Days / 1 Night ... 1000 yen

Note: Additional days ... 500 yen / day
Note: Wheelchair numbers are limited, please make reservations in advance.

Editor / Publication Fukushima Barrier-Free Tour Center

〒960-8031 Fukushima-ken, Fukushima-shi, Sakae-machi 1-1
TEL 024-531-6428
URL <https://www.fukushima-barrier-free.com/>

Additional facility information is available at the above QR code or homepage.

Co-operative Organizations / Fukushima Prefecture Architect Association, Fukushima City Branch Women's Association
The published information is current as of March 2020

Recommended Tourist Spot 1



Hanamiyama Park Area

The most popular tourist spot for seeing flowers in Fukushima City.



A Hanamiyama Walking Trail Parking (Permanent Toilet)



- Access
- Open Every Day

For facilities 17~40 please refer to the toilet information map on the reverse side.

17 Public Onsen Moniwanoyu

- 9:00~21:00
- *Open All Year



18 Atagoyama Park

- 8:30~16:30



19 Yuzawa Public Toilets (Next to Sabakoyu)

- Open Every Day



★Men's and Women's Toilets

20 Paruse Iizaka

- 9:00~21:30
- *Closed: Irregular Holidays



21 Nakano Fudosen

- 8:30~17:00
- *Open All Year



22 Jurokunuma Park

- 9:00~21:00
- *Closed: 12/28~1/4



23 Yumebutai (Tsuchiyu Onsen Tourism Community Center)

- 9:00~18:00
- *Open All Year



★Fitting Board

24 Nishida Memorial Museum

- 10:00~17:00
- *Closed: Mondays, 12/29~1/3



25 Omoriyoyama Park

- 9:00~16:30
- *Closed: Early December~ Early March



★2 Toilets (North, South)

26 Fukushima Toyota Crown Arena (National Sports Festival Memorial Gymnasium)

- 9:00~21:00
- *Open All Year



27 Fukushima Station (West Exit)

- 5:00~0:10
- *Open All Year



28 AOU (Aouze) Active Seniors Center

- 9:00~21:00
- *Open All Year



29 East Building

- 8:00~20:00
- *Open All Year



30 S-PAL Fukushima

- 10:00~20:00
- *Closed: 1/1



★Nursing Room (2F)

31 Fukushima Station Public Toilets

- Open Every Day



★Men's and Women's Toilets

32 With Motomachi

- 9:00~21:00
- *Closed: Public Holidays, 12/29~1/3



★Wheelchair Accessible Toilets (1F, 3F)

33 Pasenaka Misse

- 10:00~25:00
- *Open All Year



34 Fukushima Terra

- 9:00~22:00
- *Closed: 12/29~1/3



35 NCV Fukushima Arena (Fukushima City Gymnasium and Martial Arts Hall)

- 9:00~21:00
- *Closed: 12/28~1/4



36 Fukushima City Hall

- 8:30~18:00
- *Closed: Saturdays, Sundays, and Public Holidays, 12/28~1/4



★Ostomate (2F West)

37 Chayanuma Park

- Open Every Day
- *Closed: December 29~ End of February



38 Benteniyama Park

- 9:00~16:30
- *Closed: Early December~ Early March



★East Exit, Central (2 Toilet Facilities)

39 Senganmori Park

- 9:00~17:00
- *Closed: Mondays



40 Doaidate Park

- 9:00~16:30



Recommended Tourist Spot 2



Bandai-Azuma Skyline

This scenic route has a peak elevation of 1622m. There are many beautiful views along this route that changes colors with the seasons.

Open: Early April ~ Mid-November
Jododaira Parking / Cars 500 yen

Azuma Orchard



This orchard is located on the Fruit Line which is home to many tourist orchards. You can buy fruit or enjoy fruit picking.

D Azuma Orchard



- 8:00~17:00
- *Open every day during fruit picking season (Early June~Late November)

Explore Jododaira Wetlands



There is a boardwalk that allows wheelchair access.

B Jododaira Rest House



- 9:00~16:00

C Jododaira Parking Public Toilet

- 9:00~16:00



Mt. Shinobu



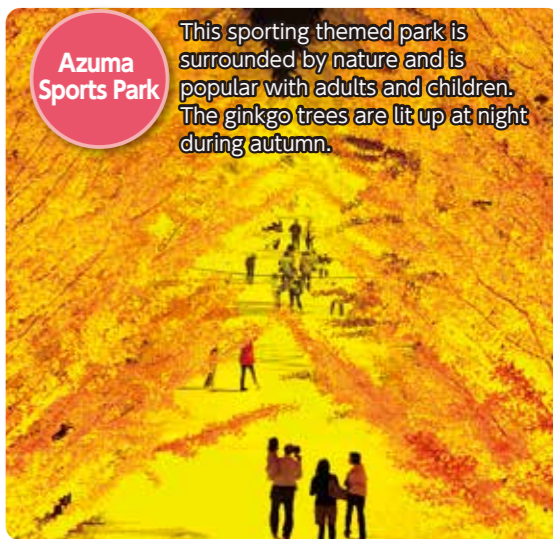
This mountain is a symbol of Fukushima City and a popular area for hiking. The Shinobuyama Guide Center offers tourist information and an amazing view.

E Shinobuyama Park (Taishido Toilet)



- 9:00~16:30
- ★Other Toilets (No.1 & No.2 Observation Decks, Gassan Parking)

Azuma Sports Park



This sporting themed park is surrounded by nature and is popular with adults and children. The ginkgo trees are lit up at night during autumn.

F Azuma Sports Park Main Parking Area



- 6:00~21:00

- Access
- Separate men and women's wheelchair accessible toilets. Baby changing table and baby chair in women's toilet.

G Azuma Gymnasium

- 9:00~21:00
- *Closed: Tuesdays, 12/29~1/3



H Toho Minna no Stadium (Azuma Athletics Stadium)

- 9:00~21:00
- *Closed: Tuesdays, 12/29~1/3



I Azuma Baseball Stadium

- 9:00~21:00
- *Closed: Tuesdays, 12/29~1/3



① Kyu Horikiri-tei



🕒 9:00~21:00 *Open All Year



② Surikami River Dam Information Center



🕒 9:00~16:30 *Closed: End of Year Holidays



③ Fukushima Sky Park



★Men's and Women's Toilets
🕒 8:30~17:00 *Closed: 12/29~3/31



④ Azuma no Eki Kokora



🕒 9:00~17:00 *Closed: 12/29~1/3



⑤ Yurakuza (Tsuchiyu Onsen Town Planning Center)



★Nursing Room
🕒 9:00~21:00 *Open All Year



⑥ Fukushima City Minka-en



🕒 9:00~16:30 *Closed: Tuesdays, 12/29~1/3



⑦ Shiki no Sato



★4 toilets located around the park.
Baby changing table in restaurant toilet.
🕒 9:00~21:00 *Open All Year



⑧ Fukushima Prefectural Museum of Art



🕒 9:30~17:00
*Closed: Mondays, The day following a public holidays, 12/28~1/4



Fukushima City Toilet Information

There are multi-purpose toliets at many tourist facilities around Fukushima City.
Enjoy your visit with peace of mind.

Usage Guide

🕒 Toilet Availability Hours

♿ Wheelchair Accessible Toilet
🚽 Ostomate
♿ Universal Seat

💧 Electronic Bidet
👶 Baby Changing Table
♿ Wheelchair Accessible Parking



⑨ Corasse Fukushima



★Wheelchair Accessible Toilets (1F, 4F)
*4F is not available when the venue is not in use
🕒 8:00~21:00 *Closed: 11/23



⑩ Jomopia Miyahata



★There is a wheelchair accessible toilet with ostomate in the rest area.
🕒 9:00~17:00 *Closed: Tuesdays



⑪ Fukushima City Yuji Koseki Memorial Hall



🕒 9:00~16:30 *Closed: 12/29~1/3



⑫ Fukushin Yume no Ongakudo (Fukushima City Concert Hall)



🕒 9:00~21:00 *Closed: 12/29~1/3



⑬ JRA Fukushima Racecourse



🕒 9:00~17:00
*Closed: Mondays, Tuesdays, Public Holidays, End of Year Holidays



⑭ Toho Minna no Bunka Center (Fukushima Prefectural Culture Center)



★2 toilets in the Small Hall
🕒 8:30~19:00 *Closed: 12/29~1/3



⑮ Com-Com Children's Creative Learning Center



★Toilets on each floor
🕒 9:30~19:00 *Closed: Tuesdays



⑯ Ogura-tei



🕒 10:00~18:00
*Closed: Tuesdays, End of Year Holidays

